

Report To: ENVIRONMENT & REGENERATION COMMITTEE **Date:** 29 October 2015

Report By: CORPORATE DIRECTOR,
ENVIRONMENT, REGENERATION &
RESOURCES **Report No:** LP/130/15

Contact Officer: CAROLINE SHAW **Contact No:** 01475 712115

Subject: PROPOSED TRAFFIC REGULATION ORDER – DISABLED PERSONS’ PARKING PLACES (ON-STREET) ORDER NO. 4 2015

1.0 PURPOSE

- 1.1 Local Authorities are empowered to make Orders under the Road Traffic Regulation Act 1984 as amended and under the Council’s Scheme of Administration the Head of Environmental and Commercial Services is responsible for the making, implementation and review of Traffic Management Orders and Traffic Regulation Orders.
- 1.2 The provision of on-street parking places for use by disabled drivers, who are the holders of a Disabled Person’s Badge, is regulated by The Disabled Persons’ Parking Places (Scotland) Act 2009. Inverclyde Council is required to promote a Traffic Regulation Order to regulate the use of such parking places.

2.0 SUMMARY

- 2.1 In order to comply with The Disabled Persons’ Parking Places (Scotland) Act 2009, Section 5, it is proposed to introduce a Traffic Regulation Order to accompany the provision of parking places for the disabled. This will restrict parking to drivers displaying a Disabled Person’s Badge only and will enable the Police to enforce such restrictions. The proposed Order will also revoke those parking places no longer required in order to maximise street parking capacity.

3.0 RECOMMENDATION

- 3.1 That the Committee recommend to The Inverclyde Council the making of the Traffic Regulation Order – Disabled Persons’ Parking Places (On-Street) Order No. 4 2015 and remit it to the Head of Environmental and Commercial Services and the Head of Legal and Property Services to arrange for its implementation.

Gerard Malone
Legal and Property Services

4.0 BACKGROUND

- 4.1 Currently no Traffic Regulation Orders exist at the locations shown in the Order which would prohibit the allocation of parking places for Disabled Person's Badge holders.
- 4.2 No objections were received to the proposed Order.
- 4.3 The Committee is asked to note that, if approved, the Order may not be implemented until the making of the Order has been advertised to allow any persons who so wish a period of six weeks to question the validity of the Order in terms of the Road Traffic Regulation Act 1984.

5.0 IMPLICATIONS

Finance

- 5.1 There are no financial implications arising from this report.

Legal

- 5.2 There are no legal implications arising from this report.

Human Resources

- 5.3 There are no HR implications arising from this report.

Equalities

- 5.4 There are no equalities implications arising from this report.

Repopulation

- 5.5 There are no repopulation implications arising from this report.

6.0 CONSULTATIONS

- 6.1 The proposals have been advertised in the Greenock Telegraph and full details of the proposals have been made available for public inspection during normal office hours at the offices of the Head of Environmental and Commercial Services, the Head of Legal and Property Services and at Central, Port Glasgow, and Gourock Libraries. A copy of the draft Order is appended hereto for Members' information. Appendix 1

7.0 LIST OF BACKGROUND PAPERS

- 7.1 None.

THE INVERCLYDE COUNCIL
DISABLED PERSONS' PARKING PLACES
(ON-STREET) ORDER NO. 4 2015
TRAFFIC REGULATION ORDER

DRAFT

THE INVERCLYDE COUNCIL
DISABLED PERSONS' PARKING PLACES (ON-STREET)
ORDER NO. 4 2015

The Inverclyde Council in exercise of the powers conferred on them by Sections 32(1) of the Road Traffic Regulation Act 1984 ("the Act") and of all other enabling powers and after consultation with the Chief Constable of Police Scotland in accordance with Part III of Schedule 9 to the Act hereby make the following Order.

1. This Order may be cited as "The Inverclyde Council Disabled Persons' Parking Places (On-Street) Order No. 4 2015" and shall come into operation on #####

2. In this Order the following expressions have the meanings hereby assigned to them

"Council" means The Inverclyde Council or its successors as Roads Authority;

"disabled person's badge" means:

- (a) a badge issued under Section 21 of the Chronically Sick and Disabled Persons Act 1970 (as amended);
 - (b) a badge issued under a provision of the law of Northern Ireland corresponding to that section; or
 - (c) a badge issued by any member State other than the United Kingdom for purposes corresponding to the purposes for which badges under that section are issued;
- and which has not ceased to be in force.

"disabled person's vehicle" means a vehicle lawfully displaying a disabled person's badge;

"parking attendant" means a person employed in accordance with Section 63A of the Act to carry out the functions therein;

"parking place" means an area of land specified by number and name in Columns 1 and 2 in the Schedule to this Order;

"traffic sign" means a sign prescribed or authorised under Section 64 of the Act; and

"vehicle" unless the context otherwise requires, means a vehicle of any description and includes a machine or implement of any kind drawn or propelled along roads whether or not by mechanical power.

3. The Schedule titled "Disabled Persons' Parking Places (On Street) Order No. 4 2014" forms the Schedule to this Order.

4. Each area of road which is described in the Schedule to this Order and the plans relative to this Order is hereby designated as a parking place.

5. The parking places shall only be used for the leaving of disabled persons' vehicles displaying a valid disabled person's badge.

6. The limits of each parking place shall be indicated on the carriageway as prescribed by The Traffic Signs Regulations and General Directions 2002.
7. Every vehicle left in any parking place shall stand such that no parking place is occupied by more than one vehicle and that every part of the vehicle is within the limits of the parking place provided that, where the length of a vehicle precludes compliance with this paragraph, such vehicle shall be deemed to be within the limits of a parking place if;
 - i. the extreme front portion or, as the case may be, the extreme rear portion of the vehicle is within 300mm of an indication on the carriageway provided under this Order in relation to the parking place; and
 - ii. the vehicle, or any part thereof, is not within the limits of any adjoining parking place.
8. Any person duly authorised by the Council or a police officer in uniform or a traffic warden or parking attendant may move or cause to be moved in case of any emergency, to any place they think fit, vehicles left in a parking place.
9. Any person duly authorised by the Council may suspend the use of a parking place or any part thereof whenever such suspension is considered reasonably necessary:
 - i. for the purpose of facilitating the movement of traffic or promoting its safety;
 - ii. for the purpose of any building operation, demolition, or excavation in or adjacent to the parking place or the laying, erection, alteration, removal or repair in or adjacent to the parking place of any sewer or of any main, pipe, apparatus for the supply of gas, water electricity or of any telecommunications apparatus, traffic sign or parking meter;
 - iii. for the convenience of occupiers of premises adjacent to the parking place on any occasion of the removal of furniture from one office or dwellinghouse to another or the removal of furniture from such premises to a depository or to such premises from a depository;
 - iv. on any occasion on which it is likely by reason of some special attraction that any street will be thronged or obstructed; or
 - v. for the convenience of occupiers of premises adjacent to the parking place at times of weddings or funerals or on other special occasions.
10. A police officer in uniform may suspend for not longer than twenty four hours the use of a parking place or part thereof whenever such suspension is considered reasonably necessary for the purpose of facilitating the movement of traffic or promoting its safety.

11. This Order insofar as it relates to the parking places to be revoked (R) and amended, as specified in the Schedule to this Order, partially revokes and amends The Inverclyde Council On-Street Parking Places (Without Charges) Order Nos: 01/2002 and 01/2006 and The Inverclyde Council Disabled Persons' Parking Places (On-Street) Order No: 02/2010 respectively.

Sealed with the Common Seal of The Inverclyde Council and subscribed for them and on their behalf by

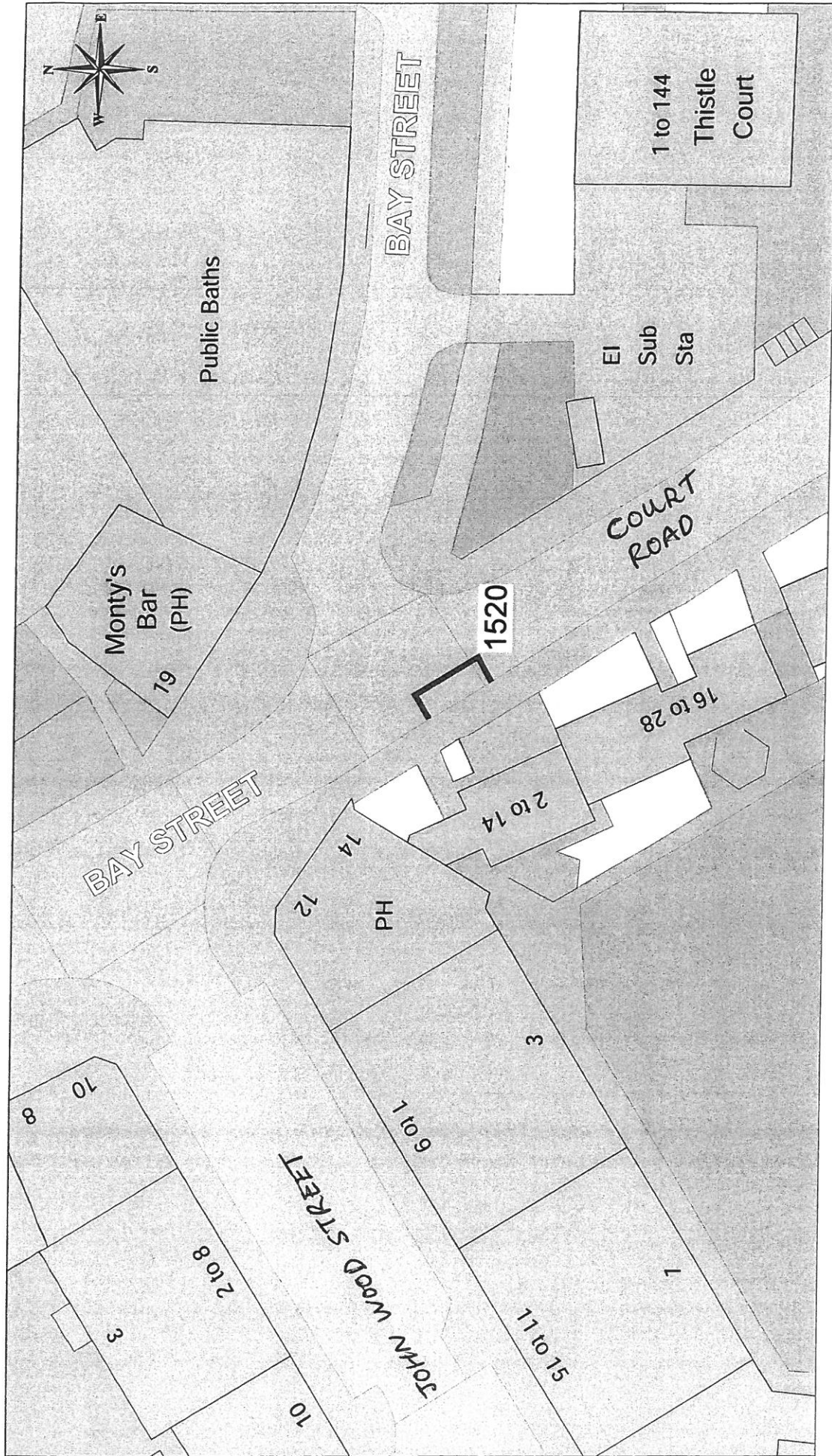
DRAFT

THE INVERCLYDE COUNCIL
DISABLED PERSONS' PARKING PLACES
(ON-STREET) ORDER NO. 4 2015

**Statement of Reasons for Proposing to Make
the above Order**

It is considered necessary in order to comply with The Disabled Persons' Parking Places (Scotland) Act 2009, Section 5, to make the above Order to provide assistance for disabled persons who hold a badge under the Disabled Persons (Badges for Motor Vehicles) (Scotland) Regulations 2000 as amended and by revoking those parking places no longer required to maximise street parking capacity.

Ian Moffat
Head of Environmental & Commercial Services
1 Ingleston Park
Cartsburn Street
GREENOCK
PA15 4UE



Inverclyde
council
Environmental Services

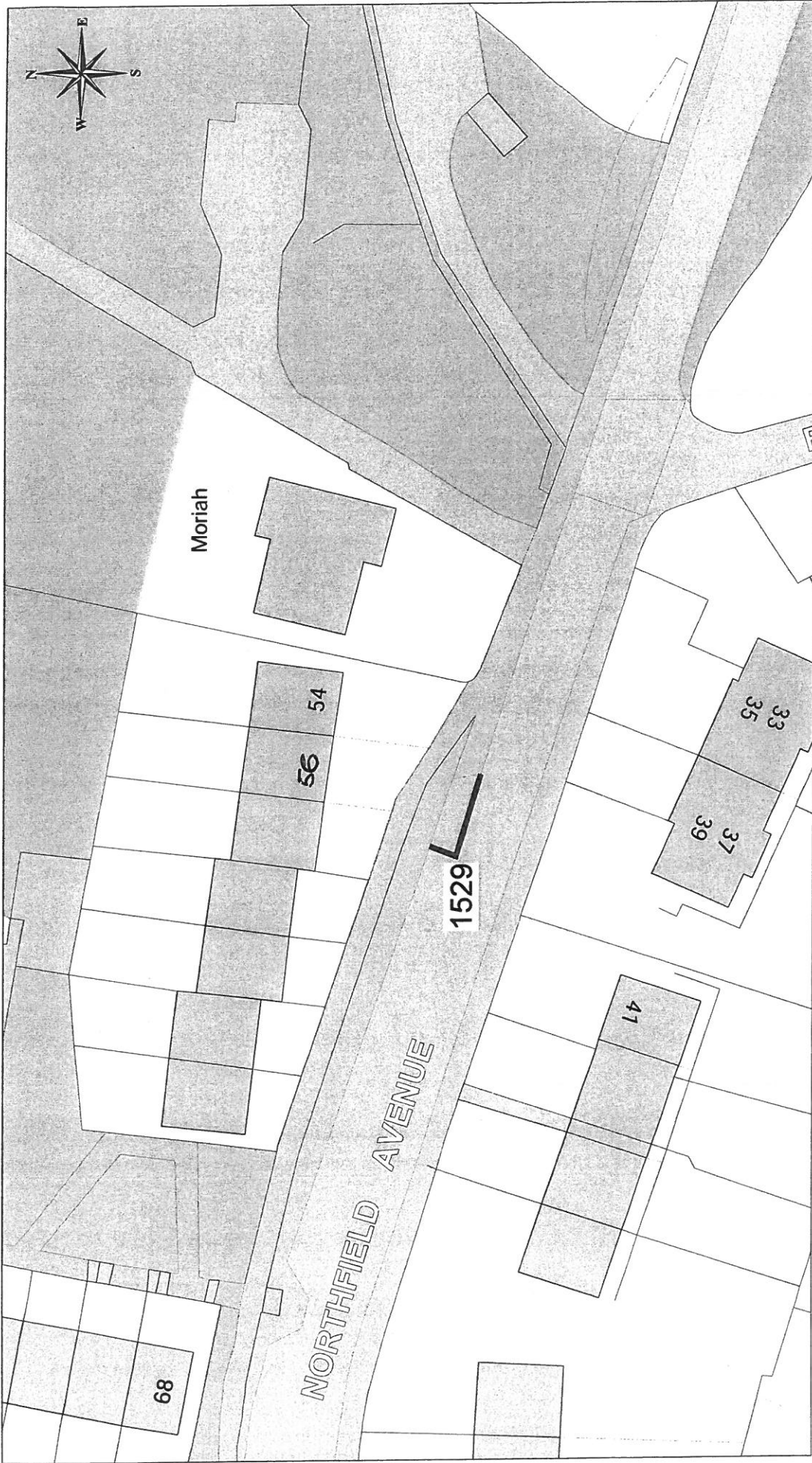
Regeneration & Environment
Corporate Director: Aubrey Fawcett

Municipal Buildings
Clyde Square
Greenock
G84 1LJ
Tel: 01475 712712
Fax: 01475 712731
aubrey.fawcett@inverclyde.gov.uk

DISABLED PERSONS' PARKING PLACE
2 COURT ROAD, PORT GLASGOW
PLACE No. 1520



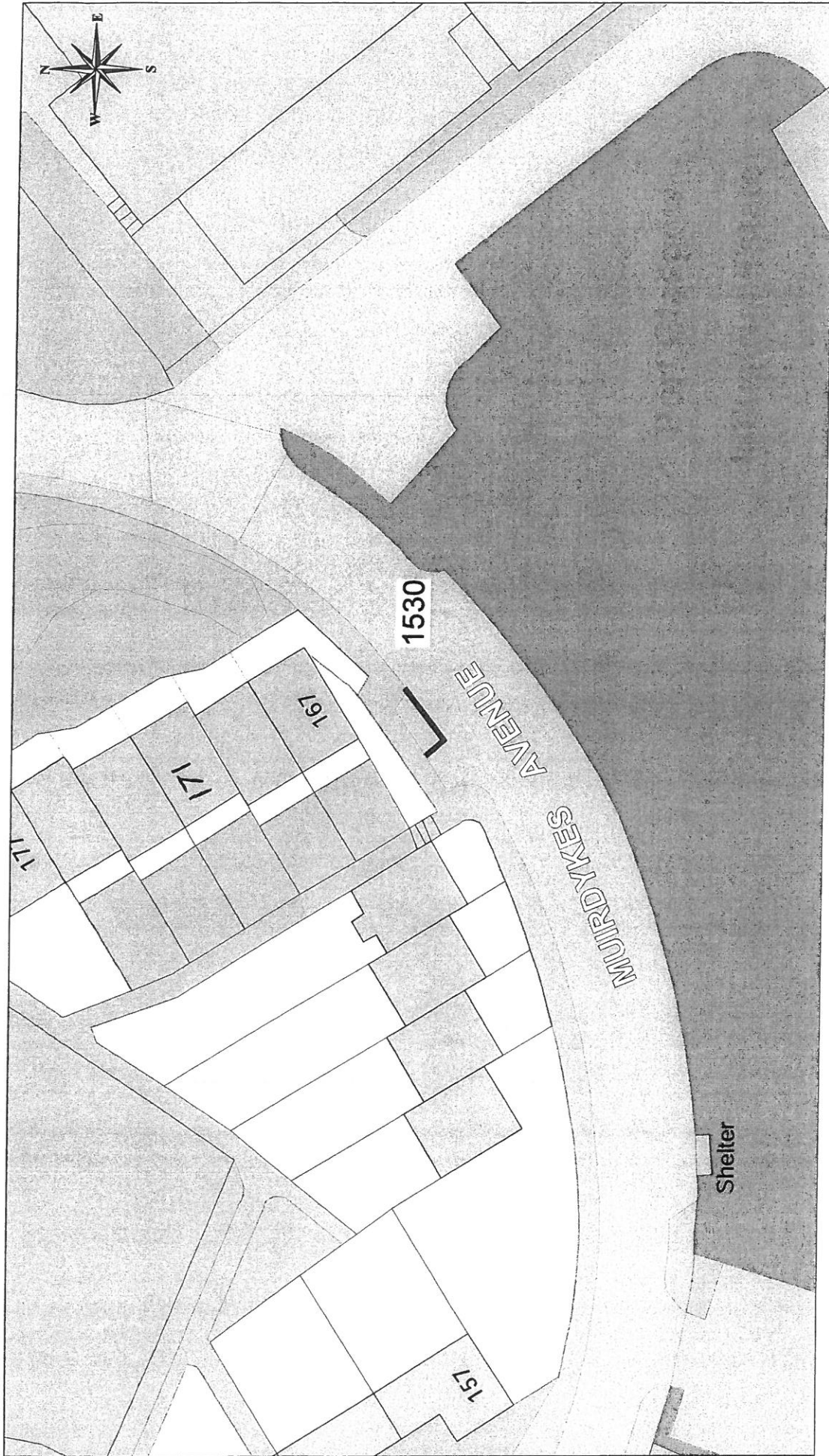
This material has been reproduced from
Ordnance Survey digital maps made available
with the permission of the Controller of
Her Majesty's Stationery Office.
© Crown copyright. Licence Number: 100023421



Ordnance Survey
 Licensed System Supplier
 This material has been reproduced from Ordnance Survey digital map data with the permission of the Controller of Her Majesty's Stationery Office.
 © Crown copyright.
 Licence Number: 100023421

DISABLED PERSONS' PARKING PLACE
56 NORTHFIELD AVE, PORT GLASGOW
PLACE No. 1529

Inverclyde
 council
Environmental Services
 Regeneration & Environment
 Corporate Director: Aubrey Fawcett
 Municipal Buildings
 Clyde Square
 Paisley
 PA15 1LY
 Tel: 01475 712712
 Fax: 01475 712731
 aubrey.fawcett@inverclyde.gov.uk



Inverclyde
 council
 Environmental Services

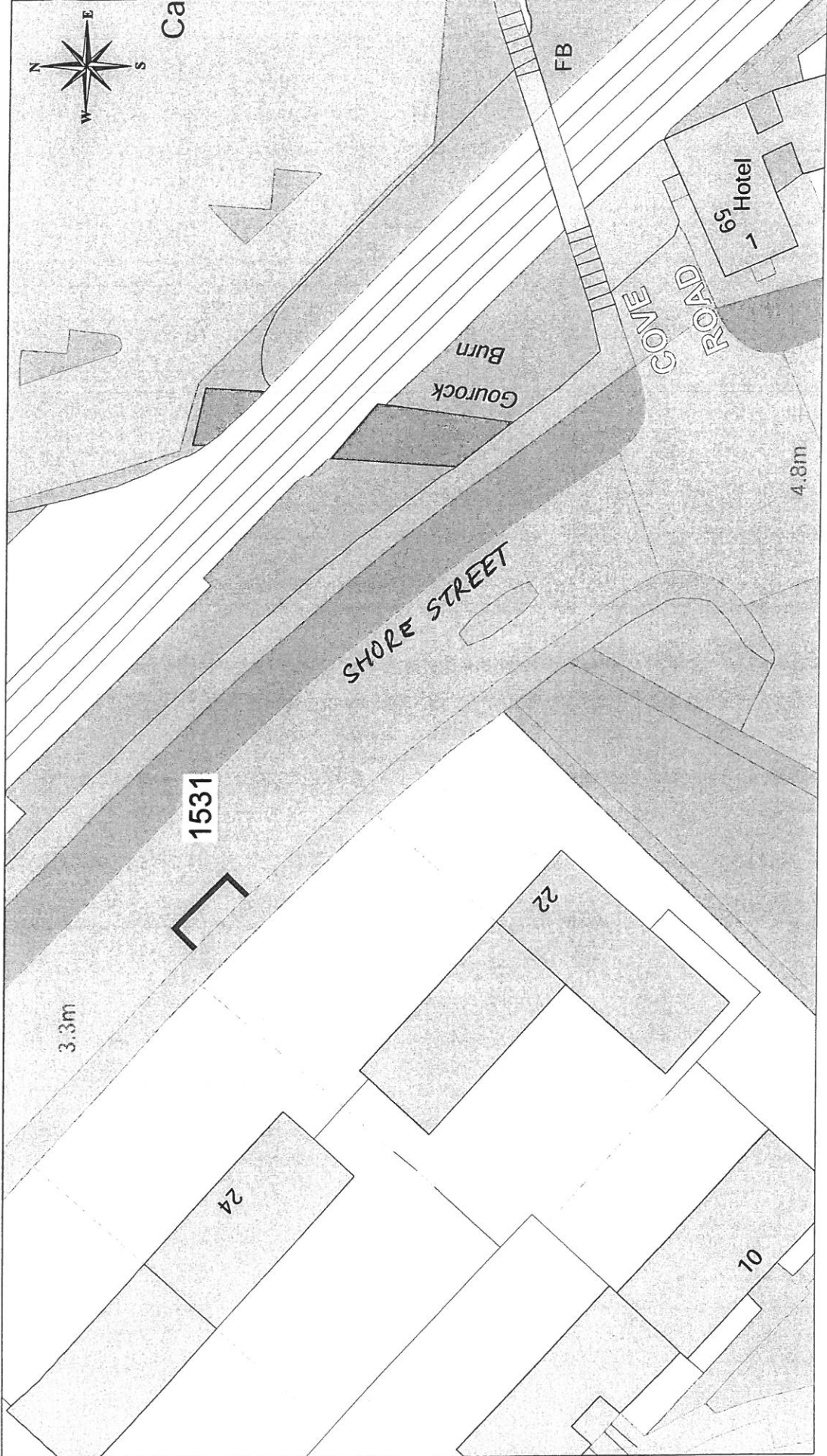
Regeneration & Environment
 Corporate Director: Aubrey Fawcett

Municipal Buildings
 Clyde Square
 Greenock
 PA15 1LY
 Tel: 01475 712712
 Fax: 01475 712731
 aubrey.fawcett@inverclyde.gov.uk

DISABLED PERSONS' PARKING PLACE
167 MUIRDYKES AVE, PORT GLASGOW
PLACE No. 1530



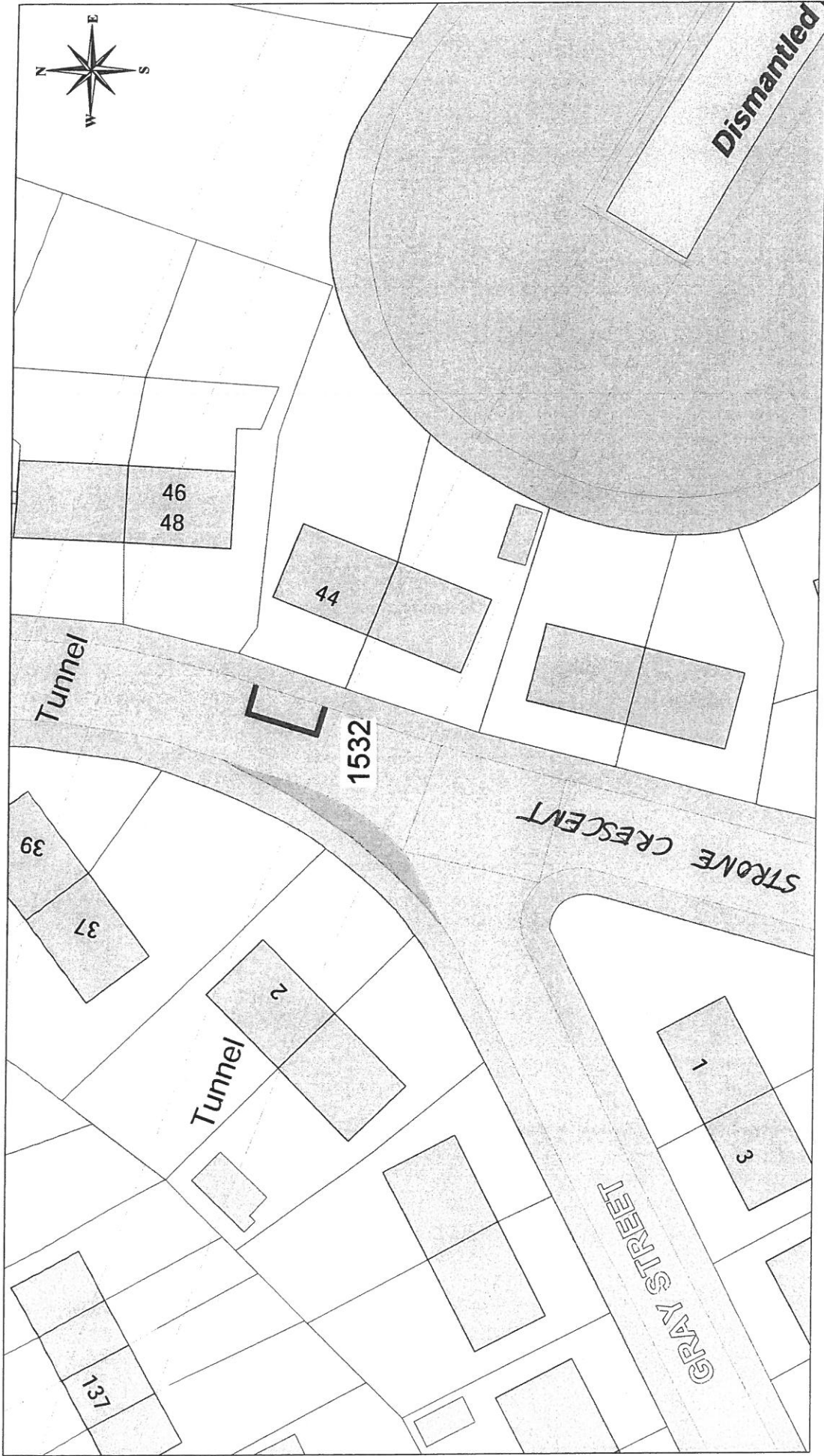
This material has been reproduced from the Ordnance Survey database with the permission of the Controller of Her Majesty's Stationery Office.
 Licence Number: 100029421



OS Ordnance Survey
 Licensed System Supplier
 This material has been reproduced from Ordnance Survey digital map data with the permission of Ordnance Survey in Her Majesty's Stationary Office.
 © Crown copyright.
 Licence Number: 100023421

DISABLED PERSONS' PARKING PLACE
 22A SHORE STREET, GOUROCK
 PLACE No. 1531

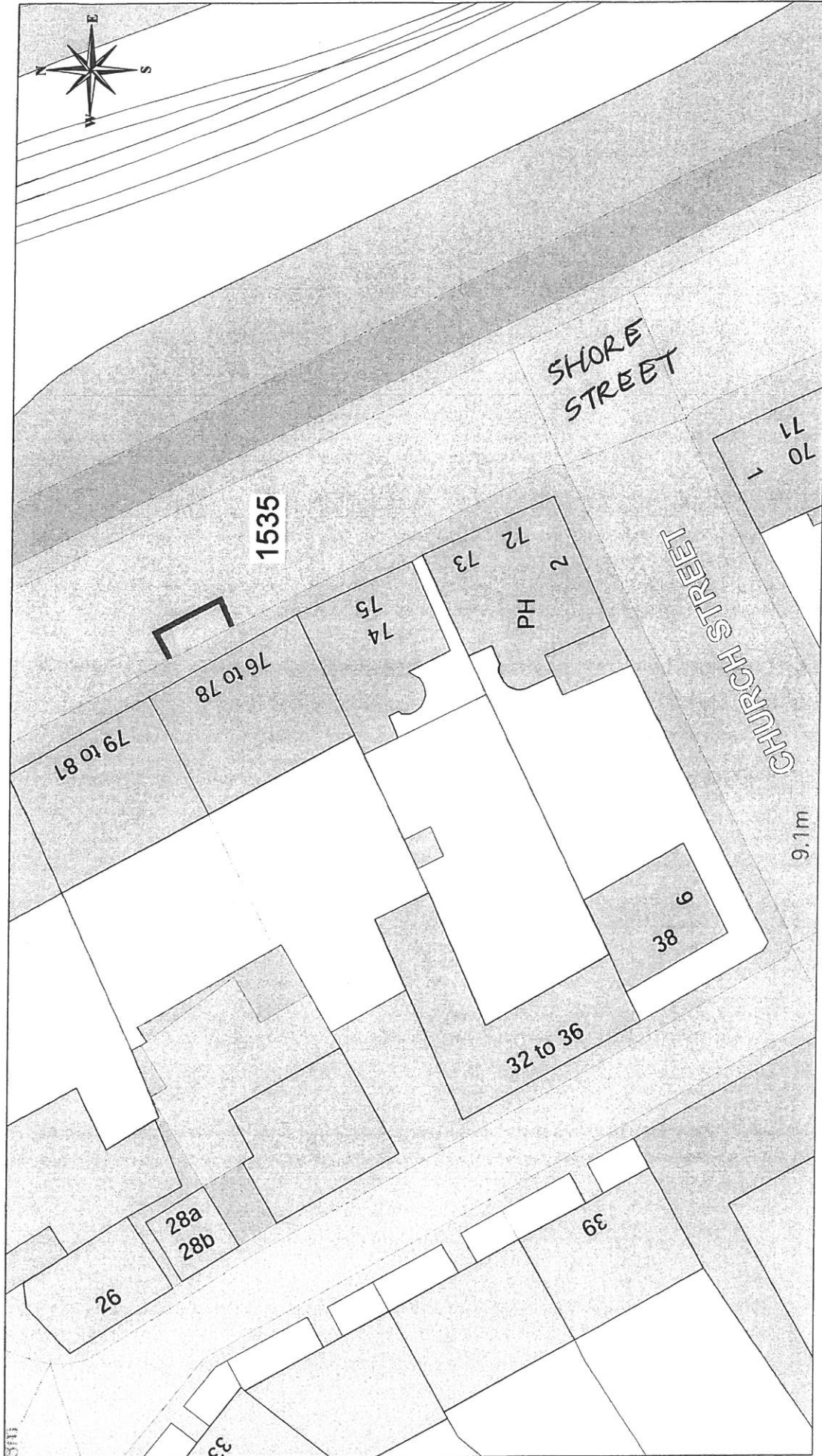
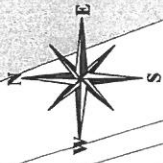
Inverclyde council
Environmental Services
 Regeneration & Environment
 Corporate Director: Aubrey Fawcett
 Municipal Buildings
 Clyde Square
 Greenock
 PA15 1LY
 Tel: 01475 712712
 Fax: 01475 712731
 aubrey.fawcett@inverclyde.gov.uk



This material has been reproduced from Ordnance Survey digital map data with the permission of the Controller of Her Majesty's Stationery Office. © Crown copyright. Licence Number: 100023421

DISABLED PERSONS' PARKING PLACE
44 STRONE CRESCENT, GREENOCK
PLACE No. 1532

Inverclyde
 council
Environmental Services
 Regeneration & Environment
 Corporate Director: Aubrey Fawcett
 Municipal Buildings
 Clyde Square
 Greenock
 PA15 1LY
 Tel: 01475 712712
 Fax: 01475 712731
 aubrey.fawcett@inverclyde.gov.uk

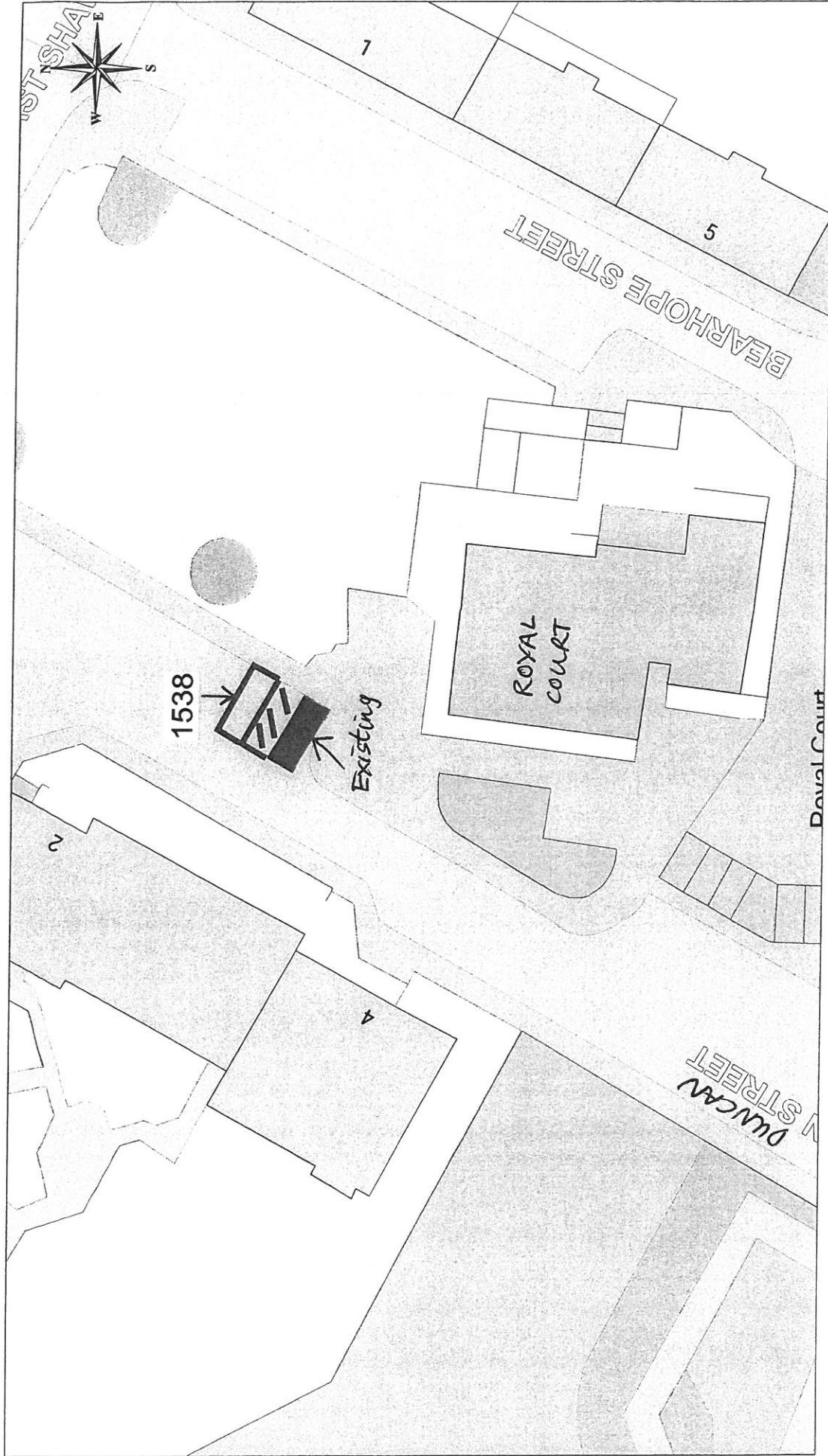


This material has been reproduced from the Ordnance Survey database with the permission of the Controller of Her Majesty's Stationery Office.
© Crown Copyright
Licence Number: 100023421

DISABLED PERSONS' PARKING PLACE
77C SHORE STREET, GOUROCK
PLACE No. 1535

Inverclyde
council
Environmental Services

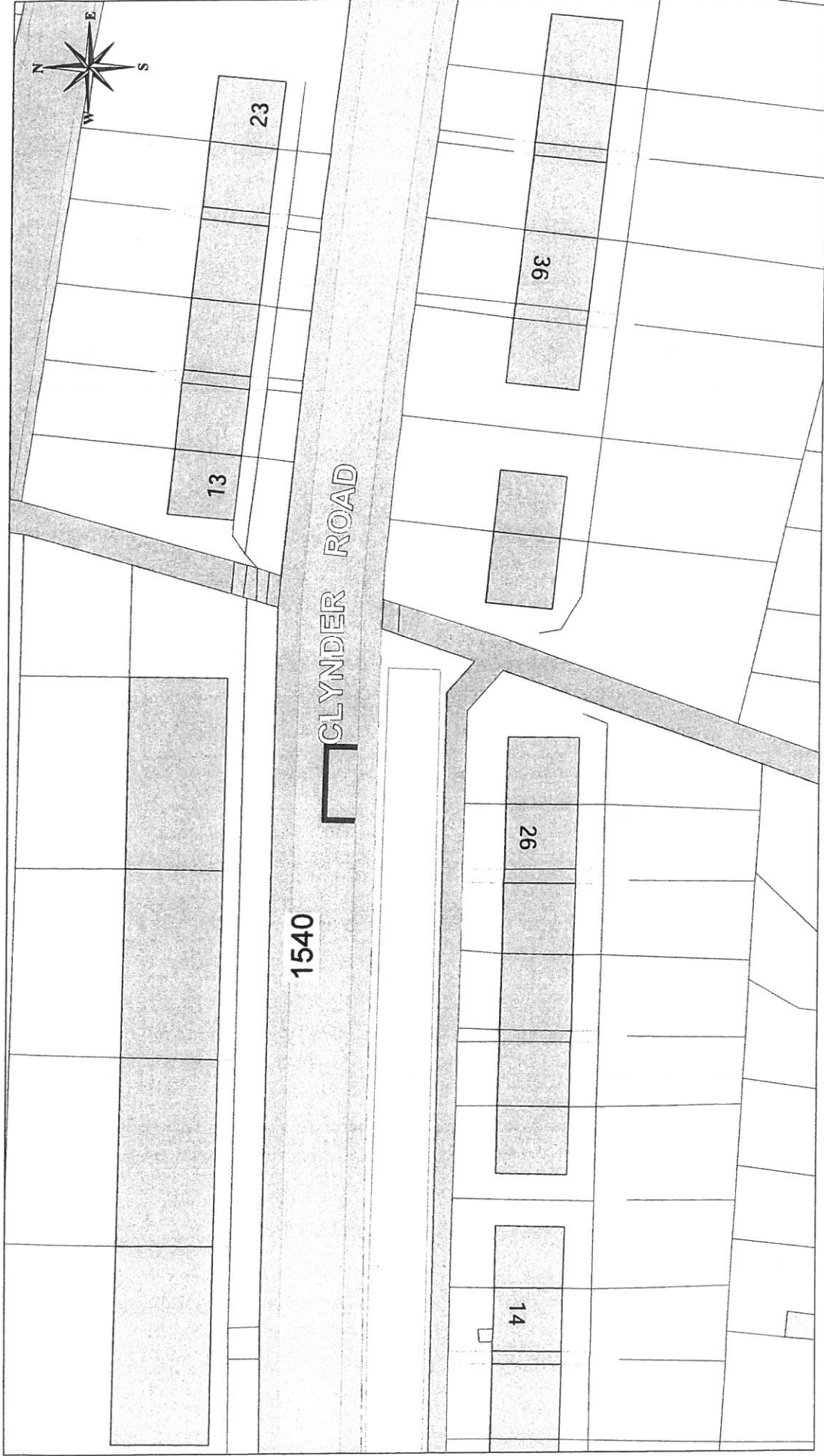
Regeneration & Environment
Corporate Director: Aubrey Fawcett
Municipal Buildings
Clyde Square
Greenock
PA15 1LY
Tel: 01475 712712
Fax: 01475 712751
aubrey.fawcett@inverclyde.gov.uk



Ordnance Survey
 Licensed System Supplier
 This material has been reproduced from Ordnance Survey digital map data with the permission of the Controller of Her Majesty's Stationery Office.
 © Crown copyright.
 Licence Number: 100023421

DISABLED PERSONS' PARKING PLACE
86 ROYAL COURT, GREENOCK
PLACE No. 1538

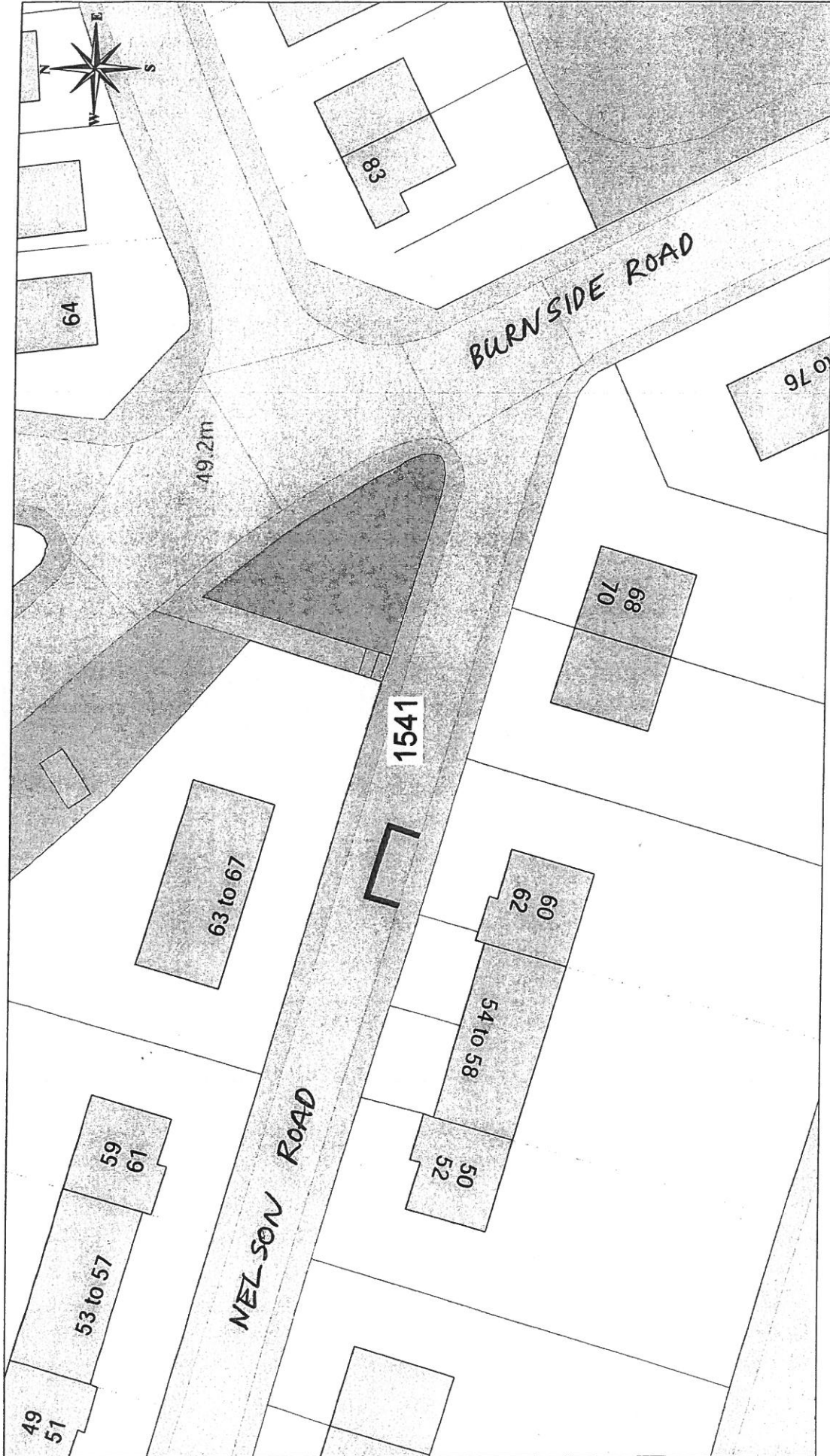
Inverclyde
 council
Environmental Services
 Regeneration & Environment
 Corporate Director: Aubrey Fawcett
 Municipal Buildings
 Clyde Square
 Greenock
 GAT3 1LW 712712
 Tel: 01475 712731
 Fax: 01475 712731
 aubrey.fawcett@inverclyde.gov.uk



OS Ordnance Survey
 Licensed System Supplier
 This material has been reproduced from Ordnance Survey digital map data with the permission of the Controller of Her Majesty's Stationery Office.
 © Crown copyright. License Number: 100023421

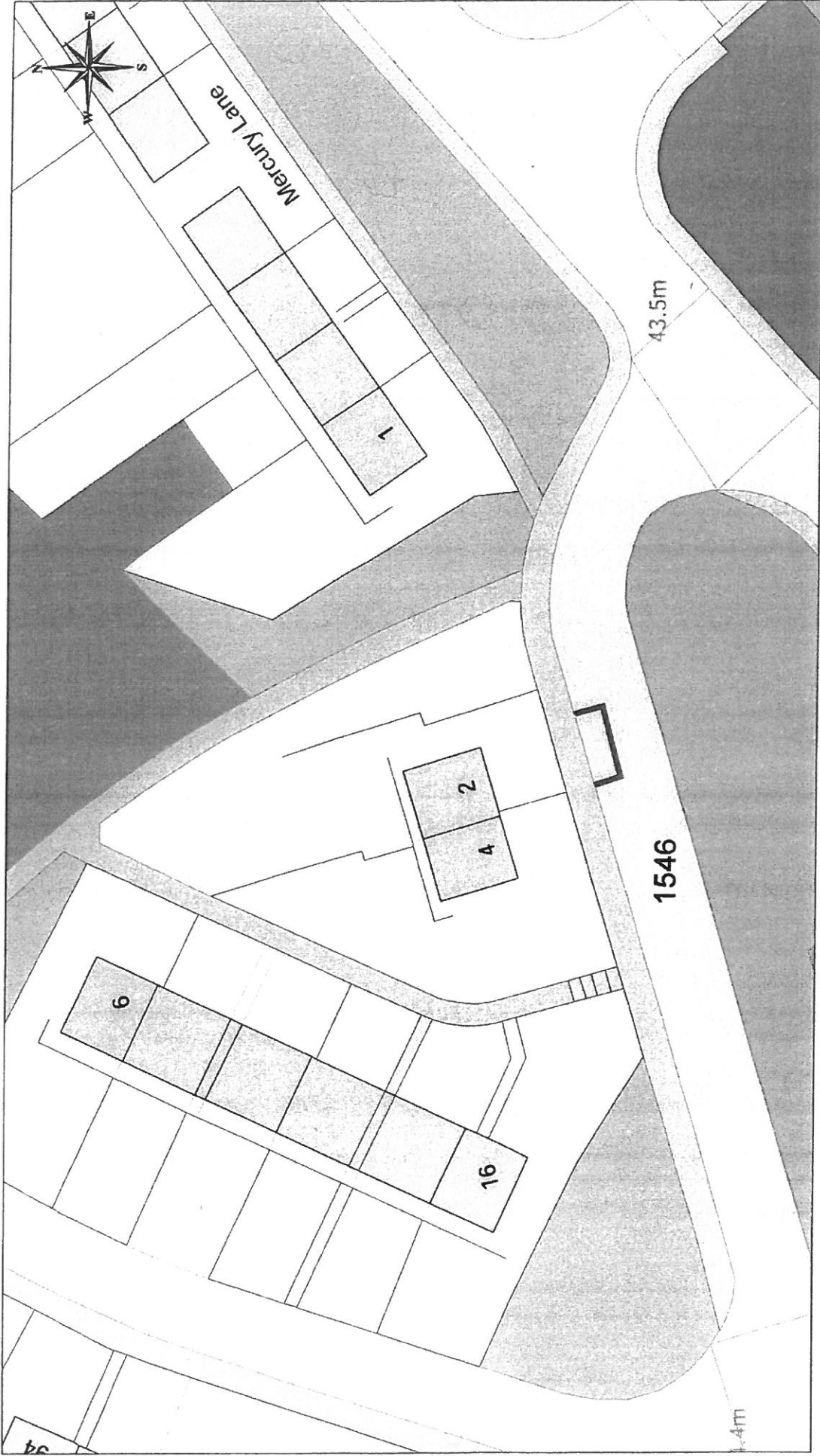
DISABLED PERSONS' PARKING PLACE
 26 CLYNDER ROAD, GREENOCK
 PLACE No. 1540

Inverclyde
 council
Environmental Services
 Regeneration & Environment
 Corporate Director: Aubrey Fawcett
 Municipal Buildings
 Clyde Square
 Greenock
 PA15 1LY
 Tel: 01475 712712
 Fax: 01475 712731
 aubrey.fawcett@inverclyde.gov.uk



DISABLED PERSONS' PARKING PLACE
 60 NELSON ROAD, GOUROCK
 PLACE No. 1541

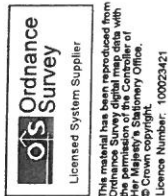
Inverclyde council
 Environmental Services
 Regeneration & Environment
 Corporate Director: Aubrey Fawcett
 Municipal Buildings
 Clyde Square
 PA15 1LY
 Tel: 01475 712712
 Fax: 01475 712731
 aubrey.fawcett@inverclyde.gov.uk




Ordnance Survey
 Licensed System Supplier
This material has been reproduced from Ordnance Survey digital map data with the permission of the Controller of Her Majesty's Stationery Office. © Crown copyright. Licence Number: 100023421

DISABLED PERSONS' PARKING PLACE
2 FLATTERTON ROAD, GREENOCK
PLACE No. 1546

Inverclyde council
Environmental Services
 Regeneration & Environment
 Corporate Director: Aubrey Fawcett
 Municipal Buildings
 Clyde Square
 Greenock
 PA15 1LY
 Tel: 01475 712712
 Fax: 01475 712731
 aubrey.fawcett@inverclyde.abv.uk



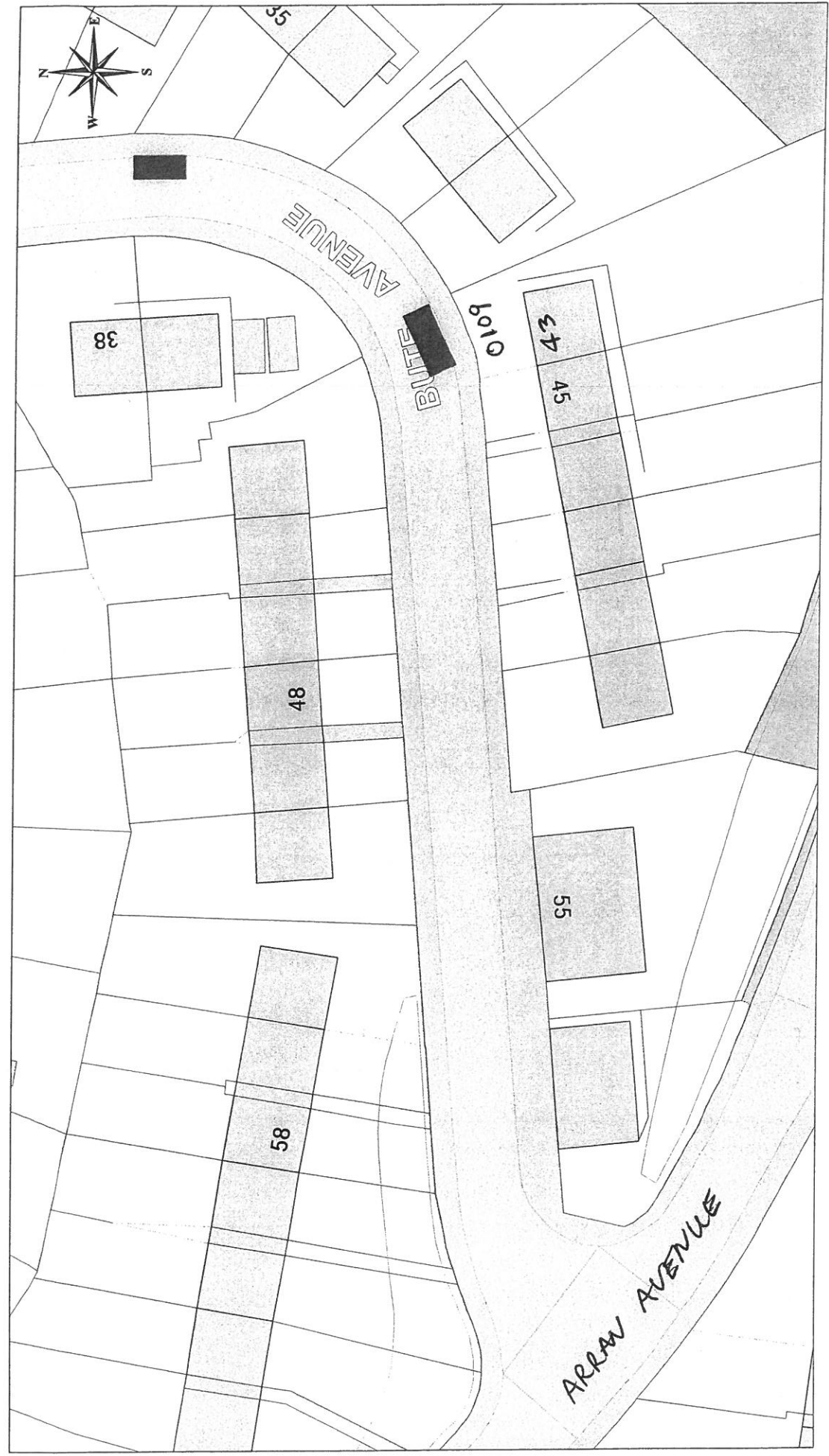
DISABLED PERSONS' PARKING PLACE
43 BUTE AVENUE, PORT GLASGOW
PLACE No. 0109 REVOCATION

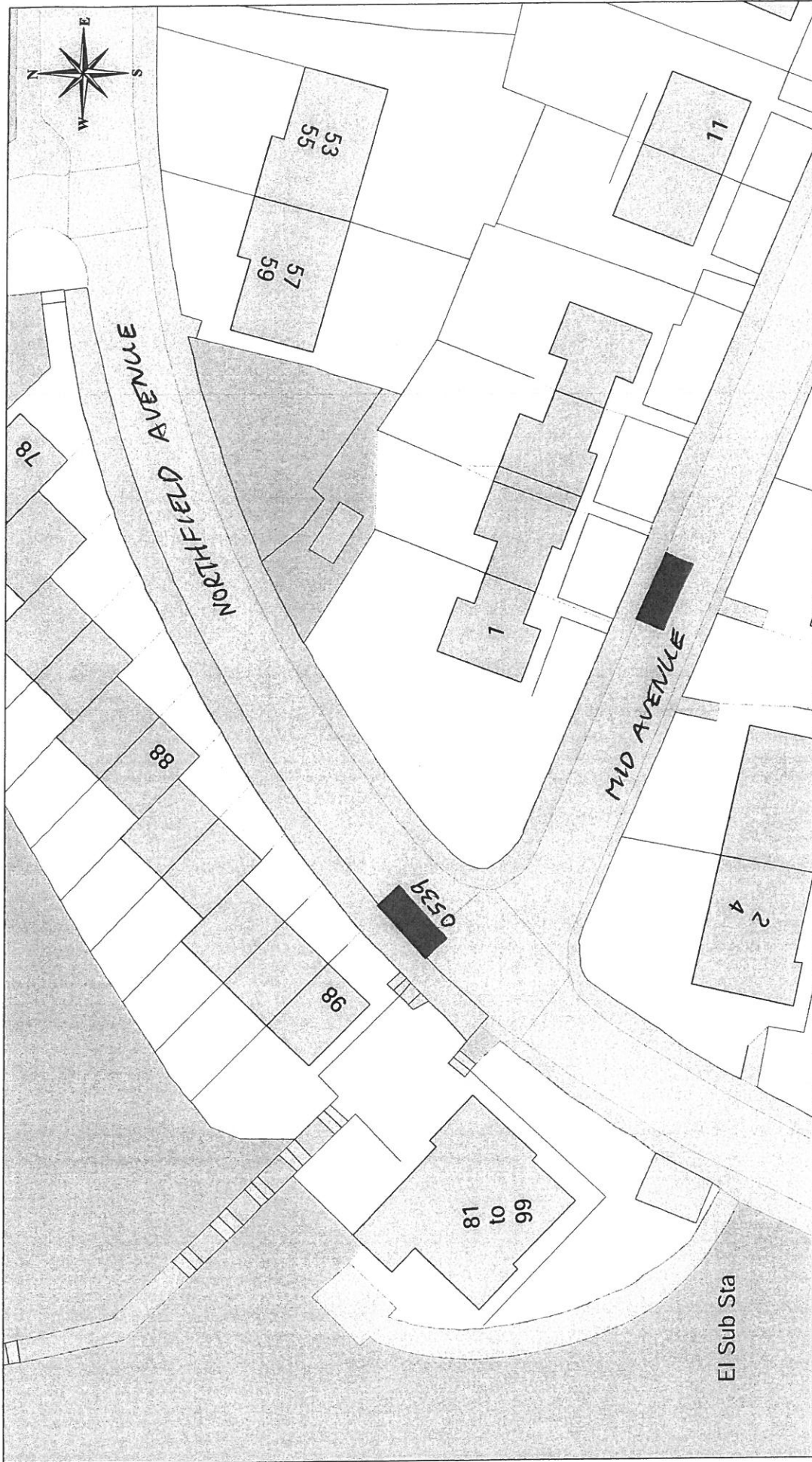
Inverclyde
 council

Environmental Services

Regeneration & Environment
 Corporate Director: Aubrey Fawcett

Municipal Buildings
 Clyde Square
 Greenock
 PA15 1LY
 Tel: 01475 712712
 Fax: 01475 712731
aubrey.fawcett@inverclyde.gov.uk





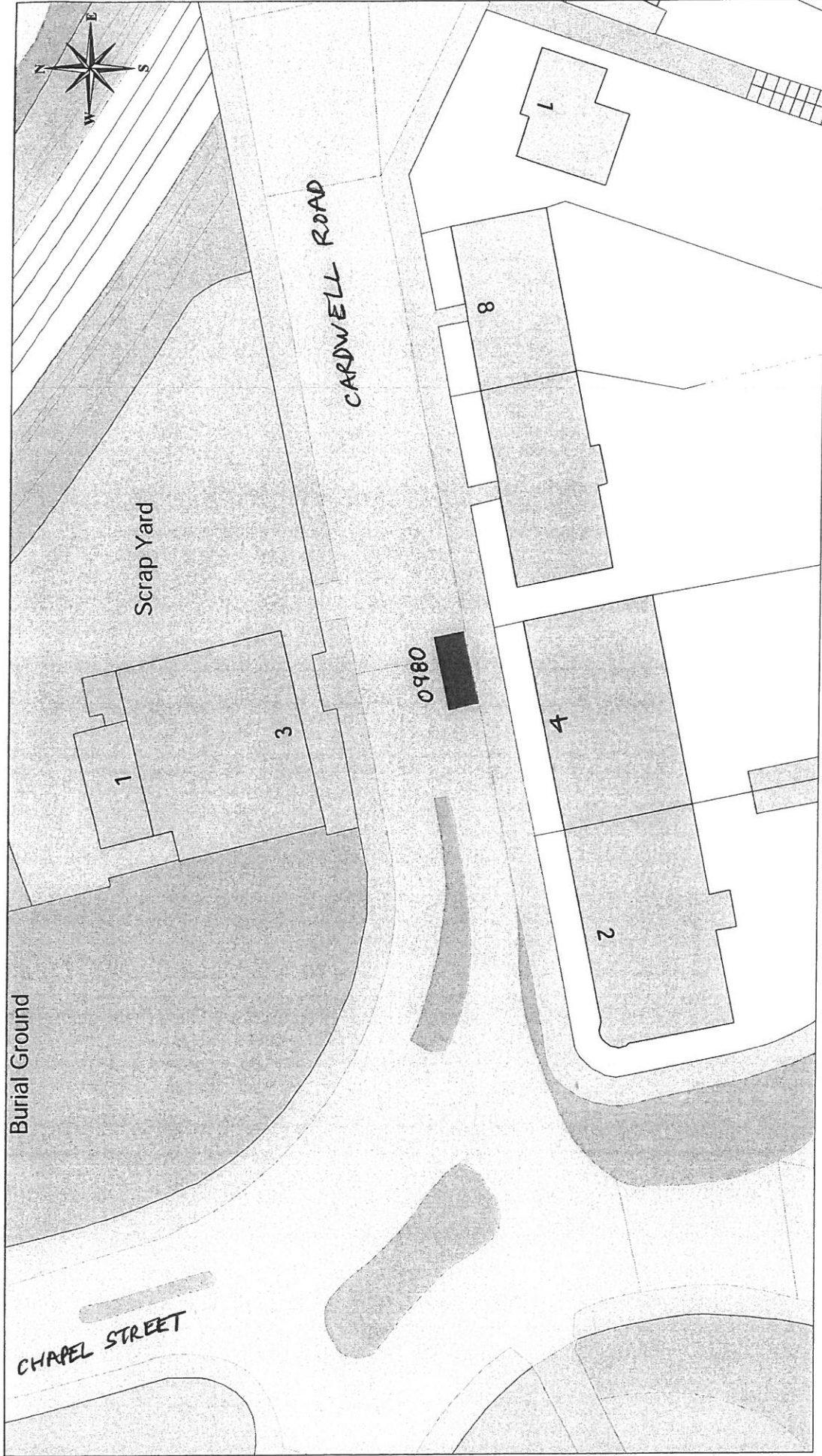
This material has been reproduced from Ordnance Survey digital map data with the permission of Ordnance Survey, Her Majesty's Stationery Office. © Crown copyright. License Number: 100023421

**DISABLED PERSONS' PARKING PLACE
98 NORTHFIELD AVENUE, PORT GLASGOW
PLACE No. 0539 REVOCATION**

Inverclyde
council
Environmental Services

Regeneration & Environment
Corporate Director: Aubrey Fawcett
Municipal Buildings
Clyde Square
Greenock
PA15 1LY
Tel: 01475 712712
Fax: 01475 712731
aubrey.fawcett@inverclyde.gov.uk

EI Sub Sta




 Ordnance Survey
 Licensed System Supplier
This material has been reproduced from Ordnance Survey digital map data with the permission of Ordnance Survey in partnership with the Controller of Her Majesty's Stationary Office. © Crown copyright. Licence Number: 100023421

DISABLED PERSONS' PARKING PLACE
4 CARDWELL ROAD, GOUROCK
PLACE No. 0980 REVOCATION

Inverclyde
 council
Environmental Services
 Regeneration & Environment
 Corporate Director: Aubrey Fawcett
 Municipal Buildings
 Clyde Square
 Greenock
 PA15 1LY
 Tel: 01475 712712
 Fax: 01475 712731
aubrey.fawcett@inverclyde.gov.uk